

TCU-2100/2300

NOTE:
This range connector pin-out shown here is correct. Some connectors are plastic molded with the pin numbers from left to right in the wrong order.

REVISION HISTORY				
LEVEL	DESCRIPTION	DATE	DRN	APP
1	RELEASE	9/1/16	FD	
1A	UPDATE	12/28/18	FD	
3	TITLE UPDATE	2/21/19	FD	

RANGE CONNECTOR FRONT VIEW				
QTY	DESCRIPTION	PIN	NOTES	
1	CONNECTOR	CON-2131	BLK	
1	WEDGELOCK	CON-2126	RED	
2	TERMINALS	CON-2120	18-20	
6	TERMINALS	CON-2122	14-16	

C-2 OUTPUT SHAFT SPEED SENSOR FRONT VIEW				
QTY	DESCRIPTION	PCS P/N	NOTES	
1	CONNECTOR	CON-2130	BLK	
1	WEDGELOCK	CON-2125	RED	
2	TERMINAL	CON-2121		

C-3 TRANS CONNECTOR FRONT VIEW				
QTY	DESCRIPTION	PCS P/N	NOTES	
1	CONNECTOR	CON-2132		
9	TERMINALS	CON-2121		
1	WEDGE LOCK	CON-2127	BLK	
1	MULTI CABLE SEAL	CON-2143		
1	CONNECTOR SEAL	CON-2144		
1	CAVITY PLUG	CON-1036		

C-4 OPTIONAL COM NOT REQUIRED FOR USE FRONT VIEW				
QTY	DESCRIPTION	PCS P/N	NOTES	
1	CONNECTOR	CON-3416		
3	TERMINALS	CON-1038		
1	TPA	CON-3417	CREAM	
3	CABLE SEALS	CON-1027	WHT	

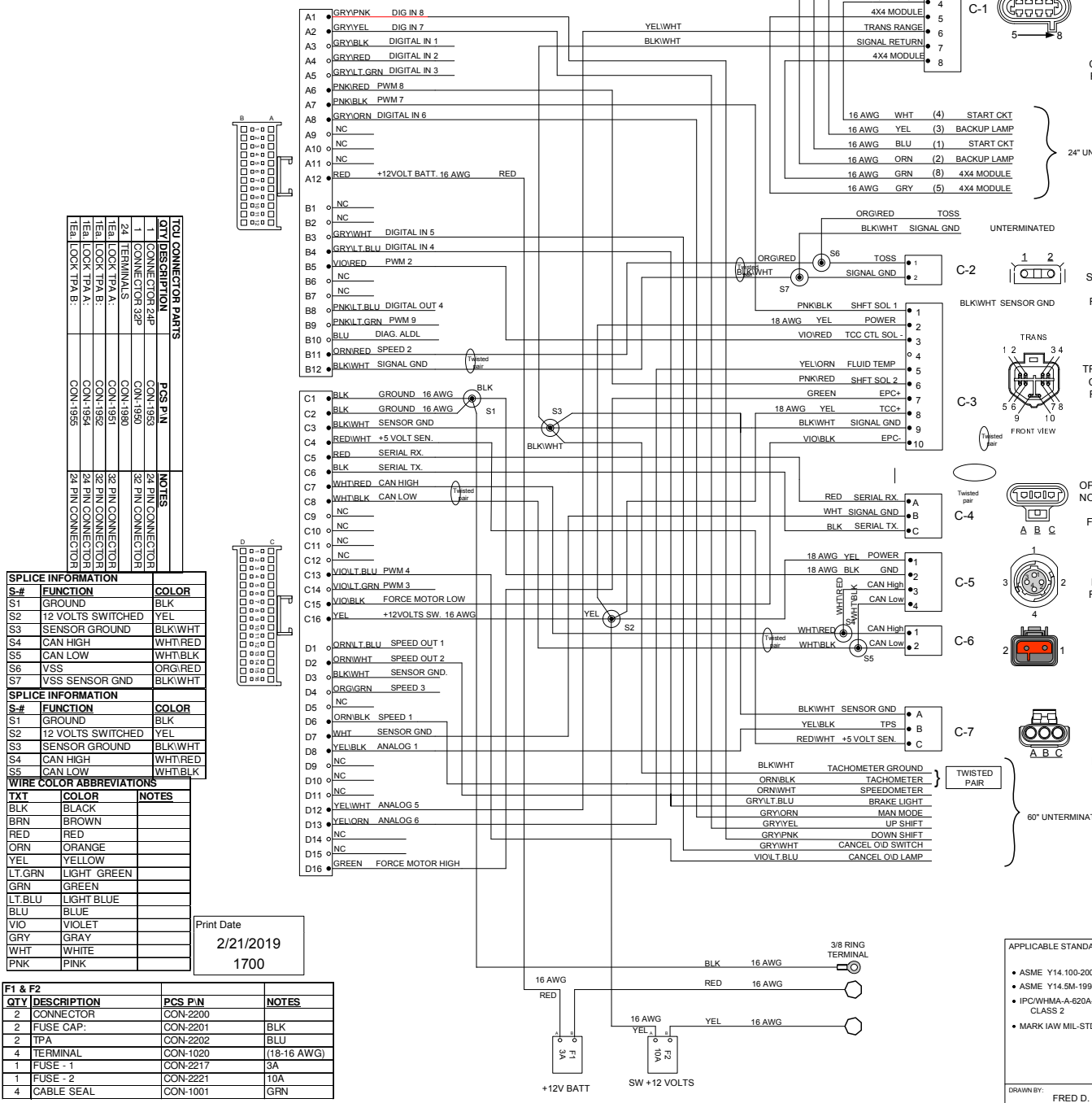
C-5 OPTION PCS EXPANSION FRONT VIEW				
QTY	DESCRIPTION	PCS P/N	NOTES	
1	CONNECTOR	CON-0065		
4	TERMINALS	CON-0051		

C-6 PCS EXPANSION FRONT VIEW				
QTY	DESCRIPTION	P/N	NOTES	
1	CONNECTOR	CON-5050		
2	TERMINALS	CON-5200	(20-18gauge)	
1	WEDGE LOCK	CON-5100	ORN	

C-7 THROTTLE POSITION FRONT VIEW				
QTY	DESCRIPTION	P/N	NOTES	
1	CONNECTOR	CON-2302		
3	TERMINALS	CON-1006		
3	RUBBER SEALS	CON-1004		

CHASSIS GND				
QTY	DESCRIPTION	P/N	NOTES	
1	RING TERM.	CON-0350		

C-7M THROTTLE POSITION SENSOR PIGTAIL				
QTY	DESCRIPTION	PCS P/N	NOTES	
1	CONNECTOR	CON-2307		
2	TERMINALS	CON-1011	20 AWG	
2	CABLE SEALS	CON-1004	VIO	
1	PLUG	CON-0999	IGRN	



SPlice INFORMATION		
S-#	FUNCTION	COLOR
S1	GROUND	BLK
S2	12 VOLTS SWITCHED	YEL
S3	SENSOR GROUND	BLK/WHT
S4	CAN HIGH	WHT/RED
S5	CAN LOW	WHT/BLK
S6	VSS	ORG/RED
S7	VSS SENSOR GND	BLK/WHT

WIRE COLOR ABBREVIATIONS		
TX	COLOR	NOTES
BLK	BLACK	
BRN	BROWN	
RED	RED	
ORN	ORANGE	
YEL	YELLOW	
LT.GRN	LIGHT GREEN	
GRN	GREEN	
LT.BLU	LIGHT BLUE	
BLU	BLUE	
VIO	VIOLET	
GRY	GRAY	
WHT	WHITE	
PNK	PINK	

F1 & F2			
QTY	DESCRIPTION	PCS P/N	NOTES
2	CONNECTOR	CON-2200	
2	FUSE CAP.	CON-2201	BLK
2	TPA	CON-2202	BLU
4	TERMINAL	CON-1020	(18-16 AWG)
1	FUSE - 1	CON-2217	3A
1	FUSE - 2	CON-2211	10A
4	CABLE SEAL	CON-1001	GRN

Print Date
2/21/2019
1700

APPLICABLE STANDARDS

- ASME Y14.100-200
- ASME Y14.5M-1994
- IPC/WHMA-A-620A-CLASS 2
- MARK IAW MIL-STD-130.

NOTES:

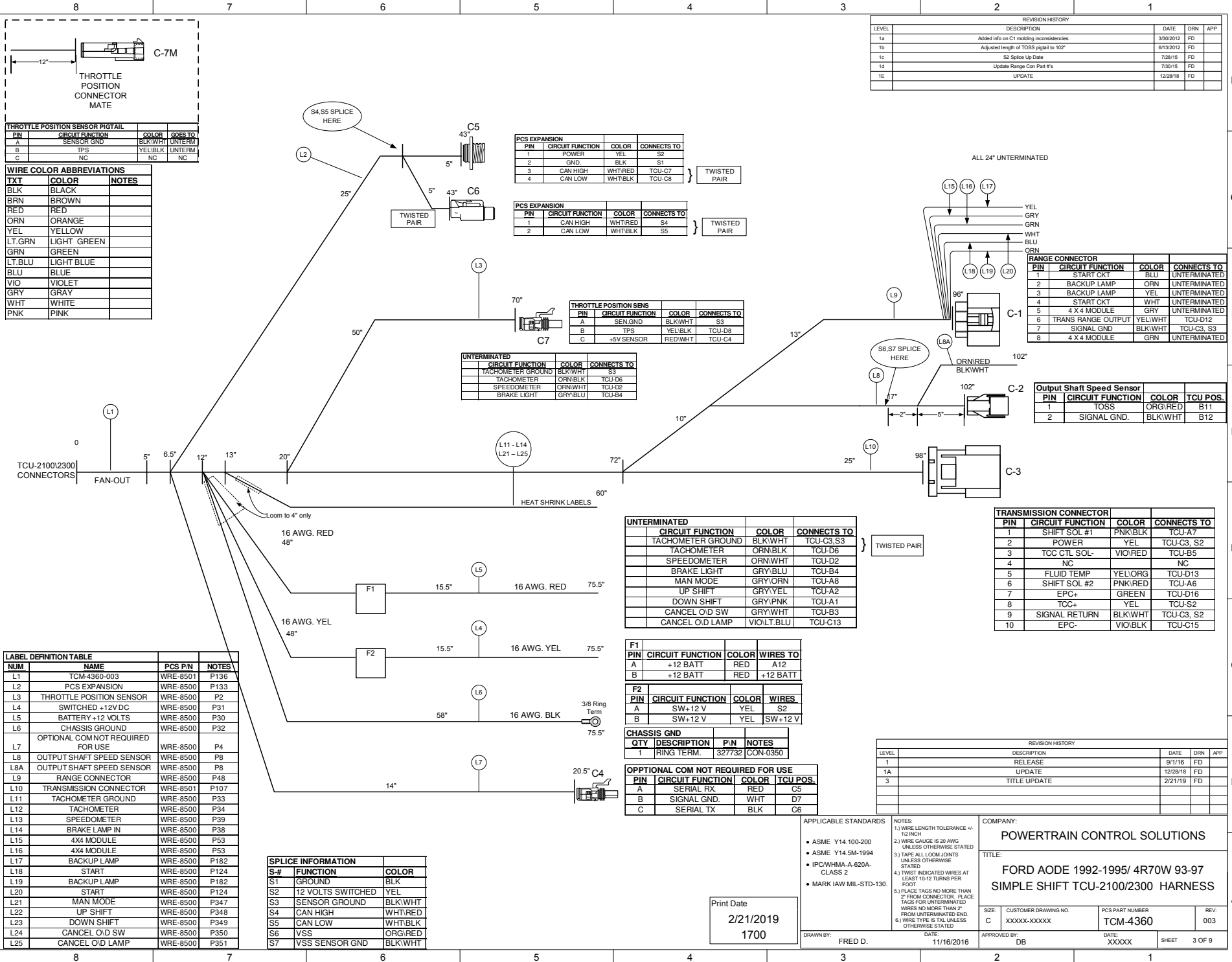
- 1.) WIRE LENGTH TOLERANCE +/- 1/2 INCH
- 2.) WIRE GAUGE IS 20 AWG UNLESS OTHERWISE STATED
- 3.) TAPE ALL LOOM JOINTS UNLESS OTHERWISE STATED
- 4.) TWIST INDICATED WIRES AT LEAST 10-12 TURNS PER FOOT
- 5.) PLACE TAGS NO MORE THAN 2" FROM CONNECTOR. PLACE TAGS FOR UNTERMINATED WIRES NO MORE THAN 2" FROM UNTERMINATED END.
- 6.) WIRE TYPE IS TXL UNLESS OTHERWISE STATED

COMPANY: POWERTRAIN CONTROL SOLUTIONS

TITLE: FORD AODE 1992-1995/ 4R70W 93-97 SIMPLE SHIFT TCU-2100/2300 HARNESS

SIZE: C CUSTOMER DRAWING NO: XXXXXX-XXXXX PCS PART NUMBER: TCM-4360 REV: 003

DRAWN BY: FRED D. DATE: 11/16/2016 APPROVED BY: DB DATE: XXXXX SHEET: 2 OF 9



REVISION HISTORY				
LEVEL	DESCRIPTION	DATE	DRN	APP
1a	Added info on C1 mating inconsistencies	3/30/2012	FD	
1b	Adjusted length of T055 pigtail to 102"	6/13/2012	FD	
1c	S2 Splice by Date	7/28/15	FD	
1d	Update Range Con Part #s	7/20/15	FD	
1e	UPDATE	12/28/16	FD	

PIN	CIRCUIT FUNCTION	COLOR	GOES TO
A	SENSOR GND	BLK/WHT	UNTERM
B	TPS	YEL/BLK	UNTERM
C	NC	NC	NC

TXT	COLOR	NOTES
BLK	BLACK	
BRN	BROWN	
RED	RED	
ORN	ORANGE	
YEL	YELLOW	
LT.GRN	LIGHT GREEN	
GRN	GREEN	
LT.BLU	LIGHT BLUE	
BLU	BLUE	
VIO	VIOLET	
GRY	GRAY	
WHT	WHITE	
PNK	PINK	

PIN	CIRCUIT FUNCTION	COLOR	CONNECTS TO
1	POWER	YEL	S2
2	GND	BLK	S1
3	CAN HIGH	WHT/RED	TCU-C7
4	CAN LOW	WHT/BLK	TCU-C8

PIN	CIRCUIT FUNCTION	COLOR	CONNECTS TO
1	CAN HIGH	WHT/RED	S4
2	CAN LOW	WHT/BLK	S5

PIN	CIRCUIT FUNCTION	COLOR	CONNECTS TO
A	SEN.GND	BLK/WHT	S3
B	TPS	YEL/BLK	TCU-D8
C	+5V SENSOR	RED/WHT	TCU-C4

CIRCUIT FUNCTION	COLOR	CONNECTS TO
TACHOMETER GROUND	BLK/WHT	S3
TACHOMETER	ORN/BLK	TCU-D6
SPEEDOMETER	ORN/WHT	TCU-D2
BRAKE LIGHT	GRY/BLU	TCU-B4

PIN	CIRCUIT FUNCTION	COLOR	CONNECTS TO
1	START CKT	BLU	UNTERMINATED
2	BACKUP LAMP	ORN	UNTERMINATED
3	BACKUP LAMP	ORN	UNTERMINATED
4	START CKT	YEL	UNTERMINATED
5	4 X 4 MODULE	GRY	UNTERMINATED
6	TRANS RANGE OUTPUT	YEL/WHT	TCU-D12
7	SIGNAL GND	BLK/WHT	TCU-C3, S3
8	4 X 4 MODULE	GRN	UNTERMINATED

PIN	CIRCUIT FUNCTION	COLOR	TCU POS.
1	TOSS	ORG/RED	B11
2	SIGNAL GND.	BLK/WHT	B12

NUM	NAME	PCS P/N	NOTES
L1	TCM-4360-003	WRE-8501	P136
L2	PCS EXPANSION	WRE-8500	P133
L3	THROTTLE POSITION SENSOR	WRE-8500	P2
L4	SWITCHED +12VDC	WRE-8500	P31
L5	BATTERY +12 VOLTS	WRE-8500	P30
L6	CHASSIS GROUND	WRE-8500	P32
L7	OPTIONAL COM NOT REQUIRED FOR USE	WRE-8500	P4
L8	OUTPUT SHAFT SPEED SENSOR	WRE-8500	P8
L8A	OUTPUT SHAFT SPEED SENSOR	WRE-8500	P8
L9	RANGE CONNECTOR	WRE-8500	P48
L10	TRANSMISSION CONNECTOR	WRE-8501	P107
L11	TACHOMETER GROUND	WRE-8500	P33
L12	TACHOMETER	WRE-8500	P34
L13	SPEEDOMETER	WRE-8500	P39
L14	BRAKE LAMP IN	WRE-8500	P38
L15	4X4 MODULE	WRE-8500	P53
L16	4X4 MODULE	WRE-8500	P53
L17	BACKUP LAMP	WRE-8500	P182
L18	START	WRE-8500	P124
L19	BACKUP LAMP	WRE-8500	P182
L20	START	WRE-8500	P124
L21	MAN MODE	WRE-8500	P347
L22	UP SHIFT	WRE-8500	P348
L23	DOWN SHIFT	WRE-8500	P349
L24	CANCEL O/D SW	WRE-8500	P350
L25	CANCEL O/D LAMP	WRE-8500	P351

S-#	FUNCTION	COLOR
S1	GROUND	BLK
S2	12 VOLTS SWITCHED	YEL
S3	SENSOR GROUND	BLK/WHT
S4	CAN HIGH	WHT/RED
S5	CAN LOW	WHT/BLK
S6	VSS	ORG/RED
S7	VSS SENSOR GND	BLK/WHT

CIRCUIT FUNCTION	COLOR	CONNECTS TO
TACHOMETER GROUND	BLK/WHT	TCU-C3, S3
TACHOMETER	ORN/BLK	TCU-D6
SPEEDOMETER	ORN/WHT	TCU-D2
BRAKE LIGHT	GRY/BLU	TCU-B4
MAN MODE	GRY/ORN	TCU-A8
UP SHIFT	GRY/YEL	TCU-A2
DOWN SHIFT	GRY/PNK	TCU-A1
CANCEL O/D SW	GRY/WHT	TCU-B3
CANCEL O/D LAMP	VIO/LT.BLU	TCU-C13

PIN	CIRCUIT FUNCTION	COLOR	WIRES TO
A	+12 BATT	RED	A12
B	+12 BATT	RED	+12 BATT

PIN	CIRCUIT FUNCTION	COLOR	WIRES
A	SW+12 V	YEL	S2
B	SW+12 V	YEL	SW+12 V

QTY	DESCRIPTION	P/N	NOTES
1	RING TERM.	327732	CON-0350

PIN	CIRCUIT FUNCTION	COLOR	TCU POS.
A	SERIAL RX	RED	C5
B	SIGNAL GND.	WHT	D7
C	SERIAL TX	BLK	C6

PIN	CIRCUIT FUNCTION	COLOR	CONNECTS TO
1	SHIFT SOL #1	PNK/BLK	TCU-A7
2	POWER	YEL	TCU-C3, S2
3	TOC CTL SOL-	VIO/RED	TCU-B5
4	NC	NC	NC
5	FLUID TEMP	YEL/ORG	TCU-D13
6	SHIFT SOL #2	PNK/RED	TCU-A6
7	EPC-	GREEN	TCU-D16
8	TC+	YEL	TCU-S2
9	SIGNAL RETURN	BLK/WHT	TCU-C3, S2
10	EPC-	VIO/BLK	TCU-C15

REVISION HISTORY				
LEVEL	DESCRIPTION	DATE	DRN	APP
1	RELEASE	9/1/16	FD	
1A	UPDATE	12/28/16	FD	
3	TITLE UPDATE	2/21/19	FD	

- APPLICABLE STANDARDS
- ASME Y14.100-200
 - ASME Y14.5M-1994
 - IPC/WHMA-A-620A-CLASS 2
 - MARK IAW MIL-STD-130.

NOTES:
 1.) WIRE LENGTH TOLERANCE +/- 1/32 INCH
 2.) WIRE GAUGE IS 20 AWG UNLESS OTHERWISE STATED
 3.) TAPE ALL LOOM JOINTS UNLESS OTHERWISE STATED
 4.) TWIST INDICATED WIRES AT LEAST 10-12 TURNS PER FOOT
 5.) PLACE TAGS NO MORE THAN 2" FROM CONNECTOR. PLACE TAGS FOR UNTERMINATED WIRES NO MORE THAN 2" FROM UNTERMINATED END.
 6.) WIRE TYPE IS TXL UNLESS OTHERWISE STATED

COMPANY:
POWERTRAIN CONTROL SOLUTIONS

TITLE:
FORD AODE 1992-1995/ 4R70W 93-97 SIMPLE SHIFT TCU-2100/2300 HARNESS

SIZE: C CUSTOMER DRAWING NO. XXXXX-XXXXX PCS PART NUMBER TCM-4360 REV: 003

DRAWN BY: FRED D. DATE: 11/16/2016 APPROVED BY: DB DATE: XXXXX SHEET 3 OF 9

Print Date
 2/21/2019
 1700